

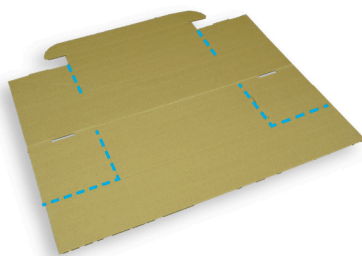


Mainely Urns & Memorials

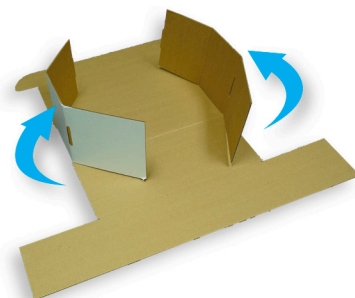
Assembly Guide | Cremation Containers



- 1** First, lay the cardboard flat on a hard surface, patterned side facing down.



- 2** Take the side flaps closest to the curved edge and separate them along the perforated lines.



- 3** Fold the side flaps up and over the rectangle adjacent to the curved edge.



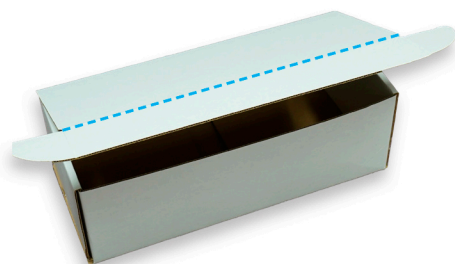
- 4** Holding the side flaps in place, bring the rest of the box up and over, fold in place.



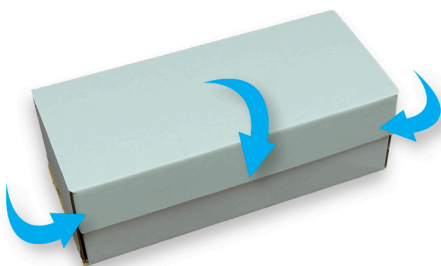
- 5** Push the panels furthest from the curved edge into the box, tucking for stability.



- 6** Fold the open side flaps into the box, tamping down for stability.



- 7** Fold the curved edge along its perforated lines.



- 8** Bring open side down, tucking curved tabs in between the panels.